



⇒ Mature banana bunch at Harvesting
(Pisang banana)



⇒ Homtong banana (Gros Michel banana)



Finally is there are several general way in taking care of thais banana pseudostem, forexamble chemical spray, fertilizer, watering, trimming and wait until the time to harvest



Information

Division of Innovation and Technology Transfer,
The Office Of Agricultural Research and Extension, Maejo
University, Chiang Mai, Thailand, 50290
Tel : +66 5387 3429
Mobile : 08 1951 5287

<http://www.facebook.com/raemju.fanpage>



Forcing of Banana to Produce Fruit Bunch by Drilling a Hole on Pseudostem Midsection



Project Leader: Mr. Nikhom Wongnanta

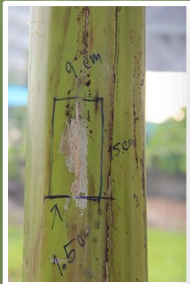
Agricultural Technical Officer Senior Professional Level
The Office Of Agricultural Research and Extension, Maejo University



Firstly, A leaf 's length is shorter than mature leaf. It looks like a roll or tube.



⇒ Drilling a hole on pseudostem midsection by 1.50 m. from the ground



⇒ Cutting the first layer of pseudostem as a rectangle (9x15cm) with a long knife

⇒ Then cut layer by layer until find the core of the banana tree



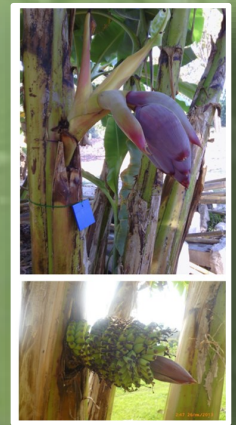
⇒ To cover the hole with a plastic sheet to block a new shoot growing out from pseudostem



⇒ Spraying insecticide, fungicide on drilled hole of pseudostem every 7-10 day



⇒ A new shoot growing out from pseudostem outside of stem



⇒ Banana flower developing



⇒ banana bunch



⇒ After cut flower, banana improving to mature stage